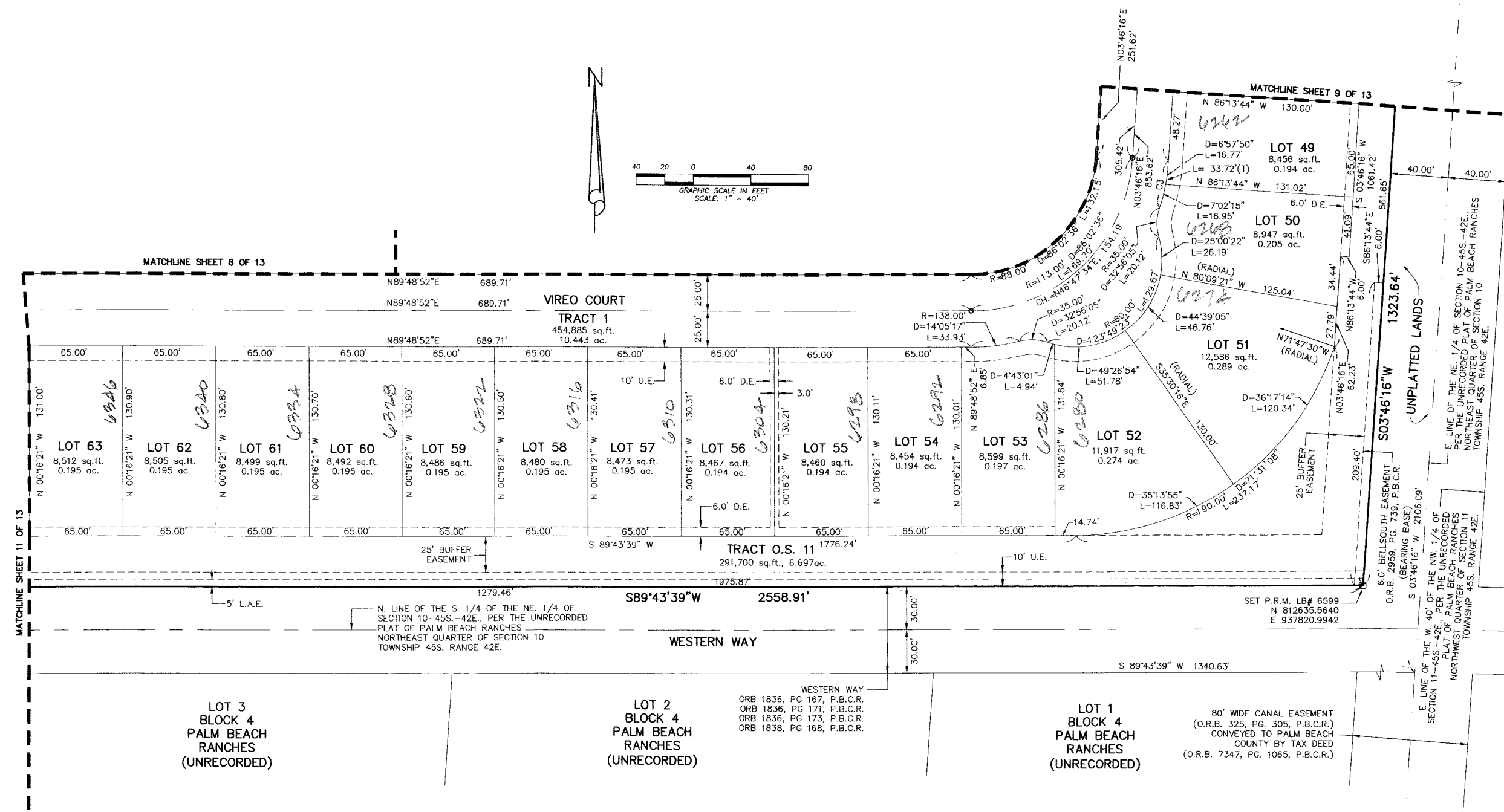
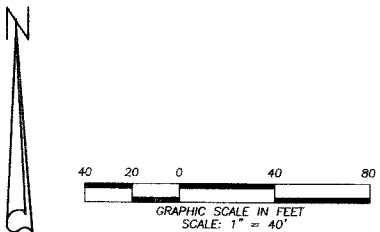
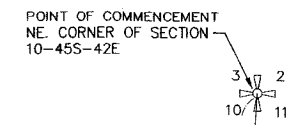


OSPREY OAKS P.U.D.

A PARCEL OF LAND LYING WITHIN THE NORTHEAST ONE-QUARTER OF SECTION 10, TOWNSHIP 45 SOUTH, RANGE 42 EAST, PALM BEACH COUNTY, FLORIDA
SHEET 12 OF 13

STATE OF FLORIDA)
 COUNTY OF PALM BEACH) S.S.

THIS INSTRUMENT WAS FILED FOR RECORD AT _____ M.
 THIS _____ DAY OF _____ 20____
 AND DULY RECORDED IN:
 PLAT BOOK _____
 ON PAGE _____
 SHARON R. BOCK
 CLERK & COMPTROLLER
 PALM BEACH COUNTY
 BY: _____
 DEPUTY CLERK



CURVE TABLE			
CURVE	RADIUS	CENTRAL ANGLE	LENGTH
C3	138.00'	14°00'05"	33.72'

LEGEND

- D = CENTRAL ANGLE
- L = ARC LENGTH
- L.A.E. = LIMITED ACCESS EASEMENT
- LB = LICENSED BUSINESS
- L.M.A.E. = LAKE MAINTENANCE ACCESS EASEMENT
- L.M.E. = LAKE MAINTENANCE EASEMENT
- O.R.B. = OFFICIAL RECORD BOOK
- P.B. = PLAT BOOK
- P.B.C.R. = PALM BEACH COUNTY RECORDS
- P.B.C.L.S.E. = PALM BEACH COUNTY LIFT STATION EASEMENT

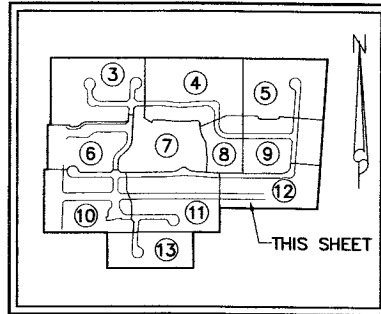
- P.B.C.U.E. = PALM BEACH COUNTY UTILITY EASEMENT
- P.C.N. = PARCEL CONTROL NUMBER
- PG. = PAGE(S)
- P.R.M. = PERMANENT REFERENCE MONUMENT
- R = RADIUS
- (T) = TOTAL
- U.E. = UTILITY EASEMENT
- ☐ = PERMANENT REFERENCE MONUMENT (P.R.M.) 4" X 4" CONCRETE MONUMENT WITH P.K. NAIL IN BRASS DISC STAMPED "PRM LB 6599"
- = (P.C.P.) SET MAG NAIL IN BRASS DISC LB 6599

COORDINATE TRANSLATION DATA

- COORDINATES SHOWN ARE GRID
- DATUM = NAD 83 1990 ADJUSTMENT
- ZONE = FLORIDA EAST
- LINEAR UNIT = US SURVEY FEET
- COORDINATE SYSTEM 1983 STATE PLANE TRANSVERSE MERCATOR PROJECTION
- GROUND DISTANCE X SCALE FACTOR = GRID DISTANCE
- ALL DISTANCES ARE GROUND UNLESS OTHERWISE NOTED
- SCALE FACTOR = 1.0000329

S 80°22'36" E (PLAT) = 00°00'00"
 S 80°22'36" E (GRID) = BEARING ROTATION (PLAT TO GRID)

LINE BETWEEN AND PALM BEACH COUNTY SURVEY SECTION HORIZONTAL CONTROL MONUMENT "CHAR-LAKE" AND "COURSE"



KEY MAP NOT TO SCALE

SHEET 12 OF 13

DENNIS J. LEAVY & ASSOCIATES, INC. LAND SURVEYORS AND MAPPERS

460 BUSINESS PARK WAY • SUITE B • ROYAL PALM BEACH, FL • 33411
 PHONE: (561) 753-0650 FAX: (561) 753-0290

SCALE: AS SHOWN CHECKED BY: DAB DATE: 01/04/11
 DRAWN BY: RRM JOB NO.: 10-062-001

THIS INSTRUMENT WAS PREPARED BY:
 DAVID A. BOWER, P.S.M. #5888 IN THE OFFICES
 OF DENNIS J. LEAVY AND ASSOCIATES, INC.
 CERTIFICATE OF AUTHORIZATION NUMBER: LB6599
 460 BUSINESS PARK WAY, SUITE B
 ROYAL PALM BEACH, FLORIDA 33411
 PHONE: (561) 753 - 0650
 FAX: (561) 753 - 0290